

AFSCME LOCAL 830

Union
Square

LOCAL 830
MEMBER
OUTREACH
PACKET

Agricultural/ Weights & Measures
Inspectors' Union Local 830

"THE STRUGGLE FOR THE
LIBERTY OF THE COMMUNITY
RATHER THAN THE LIBERTY
OF THE INDIVIDUAL"

-Franklin D. Roosevelt

CONGRATULATIONS

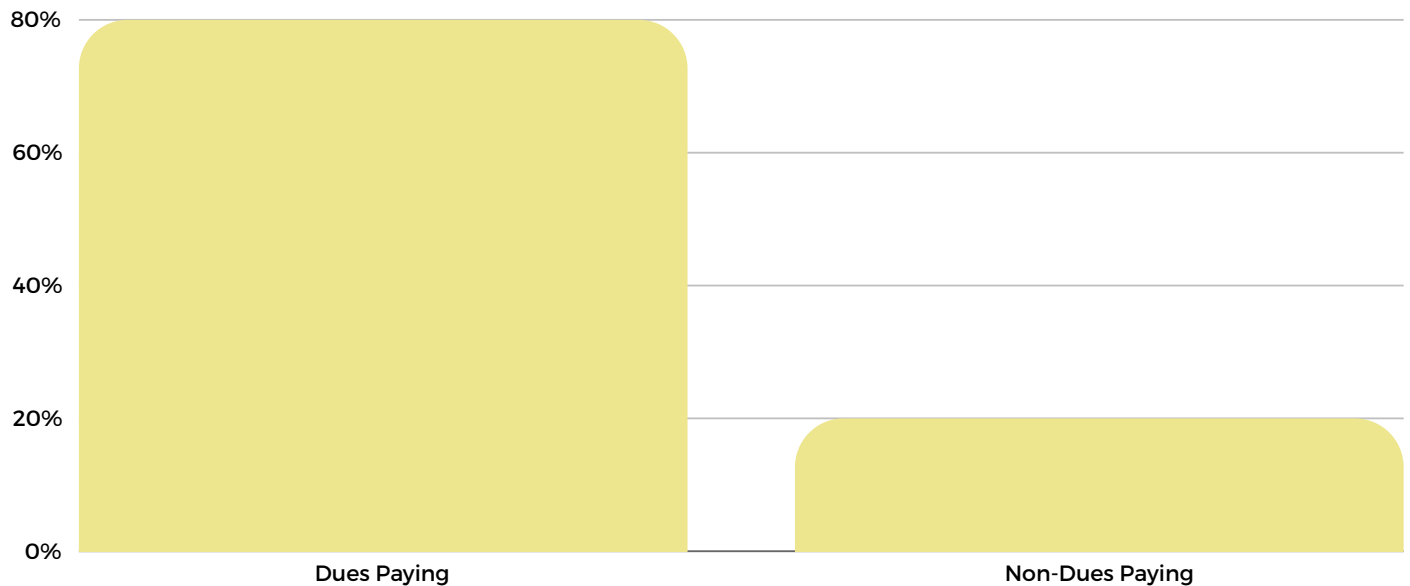
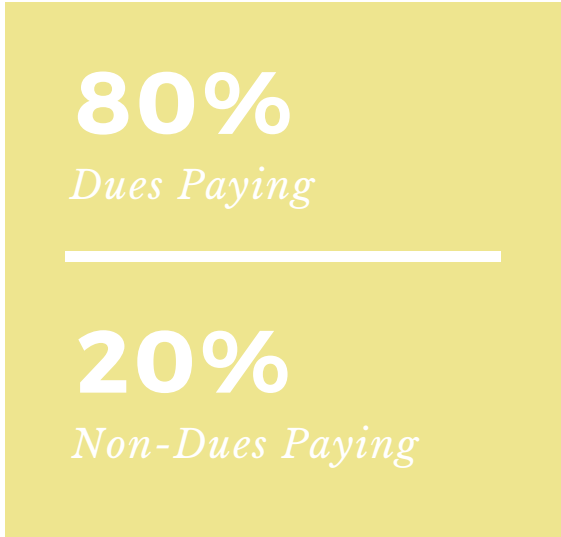
Welcome to the Los Angeles County Agricultural Commissioner/Weights & Measures Department (ACWM). The ACWM Inspectors' Union AFSCME Local 830 is excited and eager to have you on the ACWM Team. As you probably know, starting a new job can be exhilarating and stressful at the same time, it is a mixed bag of emotions but it can also be an incredible opportunity for growth. You are now a part of an essential and vital workforce within Los Angeles County. The ACWM Team is tasked with a wide-range of duties and responsibilities, such as protecting consumers and businesses from fraud; preventing the misuse of pesticides; managing and excluding pests; minimizing fire hazards from weeds and brush; and protecting consumers from substandard produce. Although it may seem overwhelming, you are not alone, the Local 830 members are there for you. Our Local 830 officers, along with the entire membership are here to encourage, advise and guide you through this journey. Strong unions come about when the membership is informed, educated and active.



Our Membership

DUES AND NON-DUES PAYING MEMBERS

215 Union Members
as of June 2021



What are dues?

Union dues are the monthly contributions members make to the union based on their salary and are deducted directly from an employees paycheck. Union dues are 1 % of your salary.

How are dues used?

- Conferences and Conventions
- Grievances
- Education
- Union Events
- Equipment/ Services

What is the difference?

On the individual level, the biggest difference is that dues paying members have a louder and more impactful voice in the decisions affecting the union, as well as the direction the union takes. On the group level, dues paying members expand the resources and funds available to fully realize our local's mission and vision.

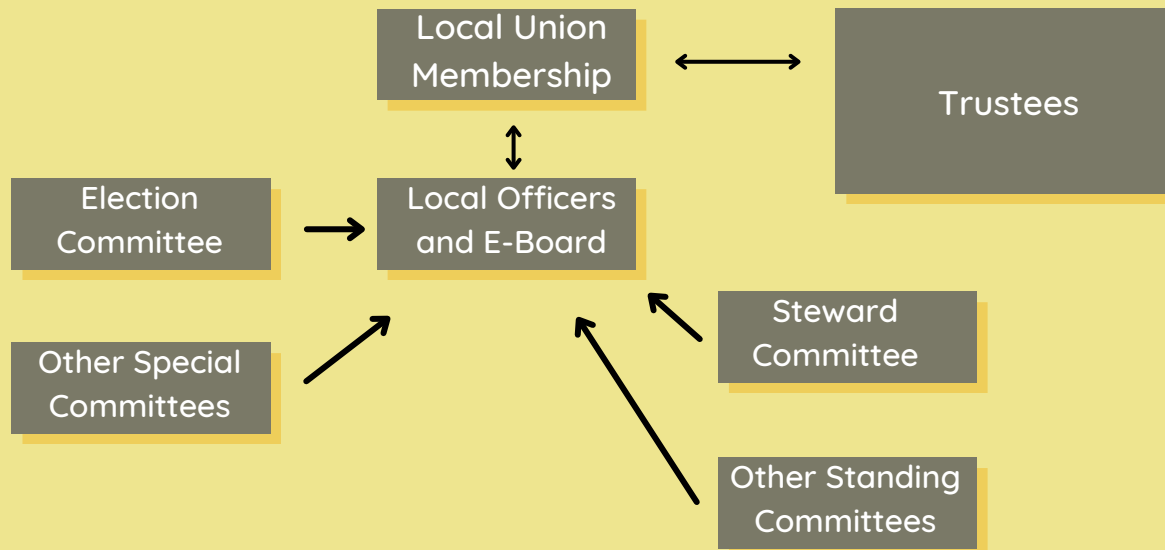
MEMORANDUM OF UNDERSTANDING

Memorandum Of Understanding (MOU) is an agreement between two or more parties outlined in a formal document. AFSCME Local 830 has a MOU with the County of Los Angeles, its purpose is to provide an orderly and equitable means of resolving any misunderstandings or differences which may arise under this MOU; and set forth the full and entire understanding of the parties reached as a result of good faith negotiations regarding the wages, hours and other terms and conditions of employment of the employees covered.

Highlights of our current MOU

- Evening and night shift differential
- Certificate bonus/ Training reimbursement
- Training Reimbursement
- Standardization bonus
- Commercial truck driver's license bonus
- Rover bonus
- Medium and high flow bonus
- Medium and heavy capacity bonus
- Compressed gas bonus
- How am I driving complaints (removal after two years)
- Alternatives to layoffs
- Jury duty and witness leave
- BU 821 Joint Labor-Management Committee
- New employee orientation

Local Union Structure



Vision

To become a robustly engaged and exceptional participant in the collective union effort that aims to protect the cherished rights of members, potential members, and all working families.

LOCAL OFFICERS

Ahmed Rasoul/ President
Maryam Dakhteh/ Vice President
Jose Aguilera/ Treasurer
Mayra Huerta/ Rec- Secretary

LOCAL EXECUTIVE BOARD MEMBERS

Elizabeth Bondy
Maritza Alvarado



LOCAL 830 ACTIVITIES



Union meetings are held on the last Thursday of the month!

CONTACT INFO

Ahmed Rasoul (P)- ahmede.rasoul@gmail.com

Maryam Dahkته (VP)- dakhteem@yahoo.com

For general questions, contact the email below

Rec.secretary.L830@gmail.com



Additional Resources



LOCAL 830 WEBSITE



ACWM WEBSITE



AFSCME COUNCIL 36 WEBSITE